

# MONTHLY MEMBERSHIP PROGRESS REPORT

LOCATION INDIA

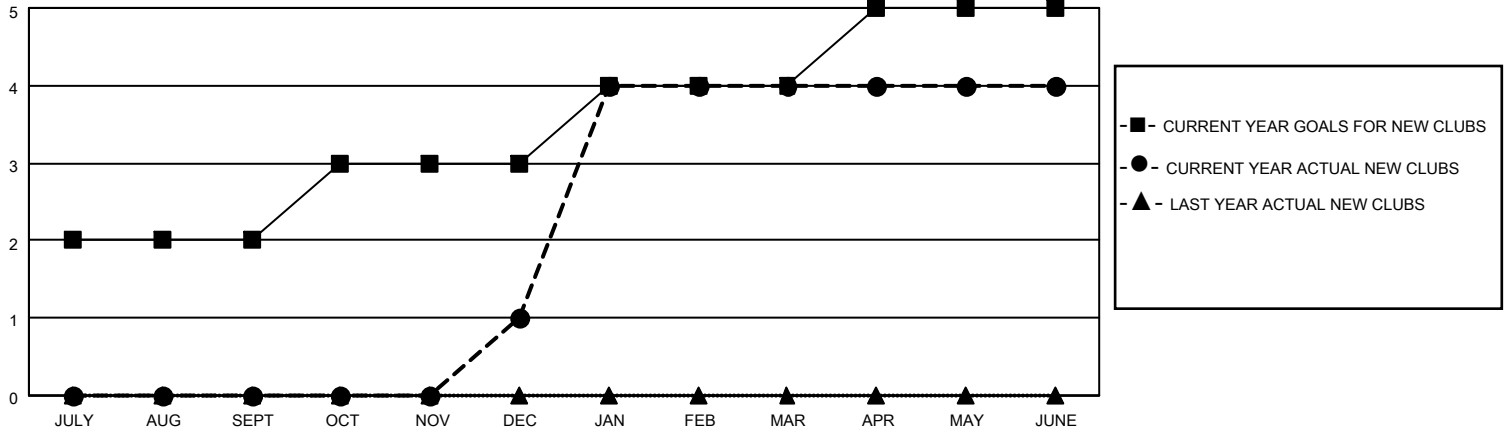
District 316 H

Results as of: 6/30/2021

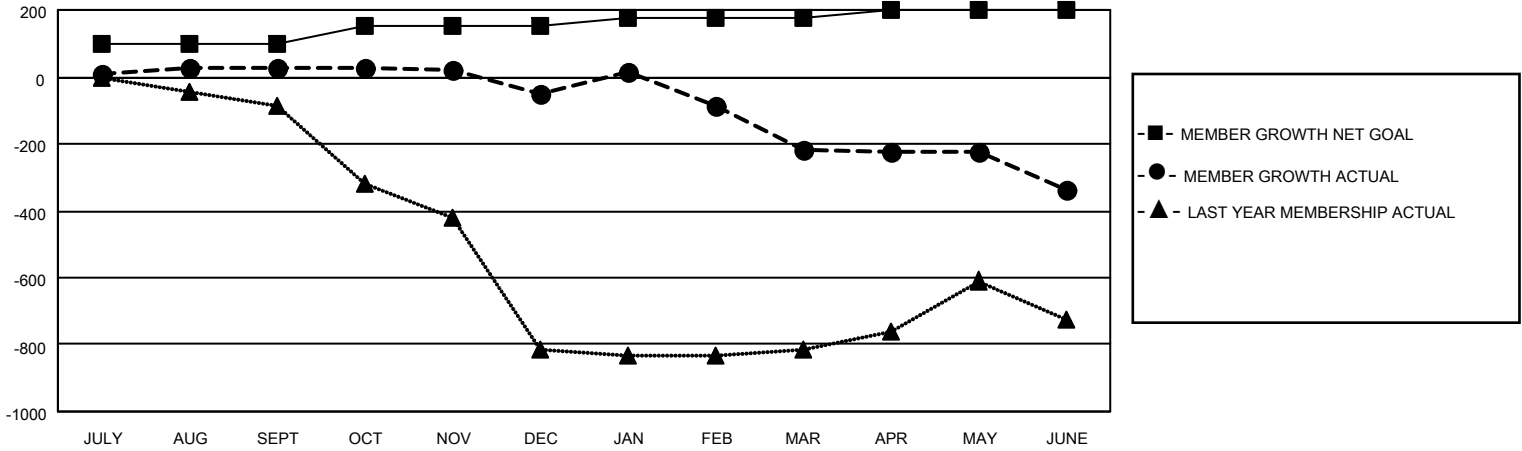
Clubs			
RESULTS FOR 2020-2021			
QUARTER	NEW CLUB GOAL	NEW CLUBS	DROPPED CLUBS
JULY/AUG/SEPT	2	0	0
OCT/NOV/DEC	1	1	0
JAN/FEB/MAR	1	3	5
APR/MAY/JUNE	1	0	0

Members			
RESULTS FOR 2020-2021			
QUARTER	MEMBER GROWTH NET GOAL	MEMBER GROWTH ACTUAL	DROPPED MEMBERS ACTUAL (including transfers)
JULY/AUG/SEPT	100	57	28
OCT/NOV/DEC	50	112	179
JAN/FEB/MAR	25	77	238
APR/MAY/JUNE	25	123	231

**GOALS AND ACTUAL NEW CLUBS CUMULATIVE**



**GOALS AND ACTUAL MEMBERS CUMULATIVE**



DROPPED CLUBS: 5	35 CLUBS OF 50 ADDED 1 OR MORE NEW MEMBERS	<u>GENDER DISTRIBUTION</u>
<u>DROPPED MEMBERS</u>	<a href="#">CLICK HERE FOR CUMULATIVE MEMBERSHIP DATA</a>	MALE            1,213 (83.54%)
DECEASED            29		FEMALE         239 (16.46%)
CLUB CANCELLED     90		TOTAL FAMILY UNIT MEMBERS            123
OTHER                 557		FAMILY MEMBERS PAYING HALF DUES            69
<b>TOTAL                 676</b>		